

Elixir Ambience Installation Guide

Release 3.5.0



Elixir Technology Pte Ltd

Elixir Ambience Installation Guide: Release 3.5.0

Elixir Technology Pte Ltd

Published 2014

Copyright © 2014 Elixir Technology Pte Ltd

All rights reserved.

Java is a trademark or registered trademark of Oracle Corporation in the United States and other countries. Microsoft and Windows are trademarks of Microsoft Corporation.

Table of Contents

1. Generic Installation Process	1
System Requirements	1
Software Requirements	1
Hardware Requirements	1
Preparations	2
Setting the Hostname and DNS Record	2
Enabling Symbolic Links	2
Obtaining Elixir Ambience	2
Generic Installation Instructions	2
2. Installation on Linux	5
Installation on Debian Linux	5
3. Installation on Macintosh	7
Installing Ambience on Macintosh OS	7
Stopping and Starting the Ambience Service on Macintosh OS	9
Starting Ambience Designer on Macintosh OS	10
4. Installation on Windows	11
Running as a Windows Service	11
5. Changing your Java Version	13
Using a Specific Version of Java	13

List of Figures

1.1. Licence Page	3
3.1. Ambience Installer	7
3.2. Enter Administrator Credentials - Ambience Installer	8
3.3. Installation Summary	8
3.4. Confirmation Dialog - Stop Ambience Service	9
3.5. Enter Administrator User Name - Ambience Service	9
3.6. Enter Administrator Password - Ambience Service	10
3.7. Start the Ambience Service	10
4.1. Windows Installer Files	12
4.2. Windows Installer Files	12

Chapter 1

Generic Installation Process

Elixir Ambience 3.5.0 features a simplified and easy installation process.

The easiest way to get familiar with Elixir Ambience is to install a small system on your local machine. You can use the cross-platform release to do this. Later on, if you want to deploy to other machines, get tighter integration with your chosen operating system, or set up services to automatically start when your server boots, you can review the platform-specific releases which are described later in this document.

System Requirements

Software Requirements

The following software must be installed before getting started:

- **Operating System:** 32-bit or 64-bit Microsoft Windows, Linux, OSX and more. Any OS on which Java runs should be able to run Ambience.
- **For Server and Designer:** Oracle Java Platform Standard Edition 7. Either the Java Runtime Edition (JRE) or Java Development Kit (JDK) may be used.
- **For Client:** For full functionality, choose a browser that supports both HTML5 and JavaScript.
- A zip file extractor such as WinZip, or PKZip on Windows. Debian Linux users can install unzip by running the command:

```
apt-get install unzip
```

as root or using sudo.

Hardware Requirements

- **For Server and Designer:** These can be installed on any 32-bit or 64-bit computing system, which is able to run Oracle Java Platform Standard Edition 7.
- **RAM:** The amount of RAM required depends on expected usage. A minimum RAM of 4GB is recommended for lightweight use.
- **Free disk space:** At least 2 GB of free disk space is required.
- **Windows File System:** Ensure that you use NTFS and NOT FAT as Ambience needs to create symbolic links during its course of operation.

Preparations

Setting the Hostname and DNS Record

Setting the Hostname is not required. You can just use `localhost` as the hostname to access Ambience, if you are accessing Ambience from the same system as where Ambience is installed.

However, if you want the Ambience server to be available to other machines across the network, you cannot use the `localhost` default, and need to use the fully qualified domain name of the server system to access it. To facilitate access, ensure that the server's Fully Qualified Domain Name (hostname) is set to the server's IP address in `/etc/hosts` (on Unix/Linux/Mac), or in `\windows\system32\drivers\etc\hosts` (on Windows).

To determine the system's hostname, open a command prompt or terminal, and type the command:

```
hostname
```

Open the hosts file and associate the hostname with the system's IP address. For example,

```
192.168.1.6 ambience-server.example.com
```

Next, contact your IT department and ask them to set up the appropriate DNS record for the Ambience server.

Enabling Symbolic Links

You have to enable symbolic links on your system as Ambience needs to create symbolic links during its course of operation.

On Unix and Linux, symbolic links are automatically enabled. Perform the following steps to enable symbolic links on Windows.

1. Launch `secpol.msc` using `Start` or `Start -> Run`.
2. Open `Security Settings -> Local Policies -> User Rights Assignment`.
3. In the list, find the `Create symbolic links` item, which represents `SeCreateSymbolicLinkPrivilege`.
4. Double-click on the item and add the user that is running the Ambience service, to the list.
5. Logout and login to apply the changes.

Obtaining Elixir Ambience

For advice on obtaining the latest release of Elixir Ambience, contact sales@elixirtech.com. For technical support on how to use Elixir Ambience effectively, contact support@elixirtech.com.

Generic Installation Instructions

1. Verify the SHA1 sum of the file that you received when you purchased Ambience, or when you downloaded a trial version, to ensure its integrity.
2. Extract the file that you received when you purchased Ambience, or when you downloaded a trial version. For example, `tar -xvzf elx-ambience-3.5.0.tgz`. This extracts all the files into a directory called `ElixirAmbience`.

If you downloaded a zip file, extract it with the extractor installed on your system. Linux users can run the command:

```
unzip zip-file-name.zip
```

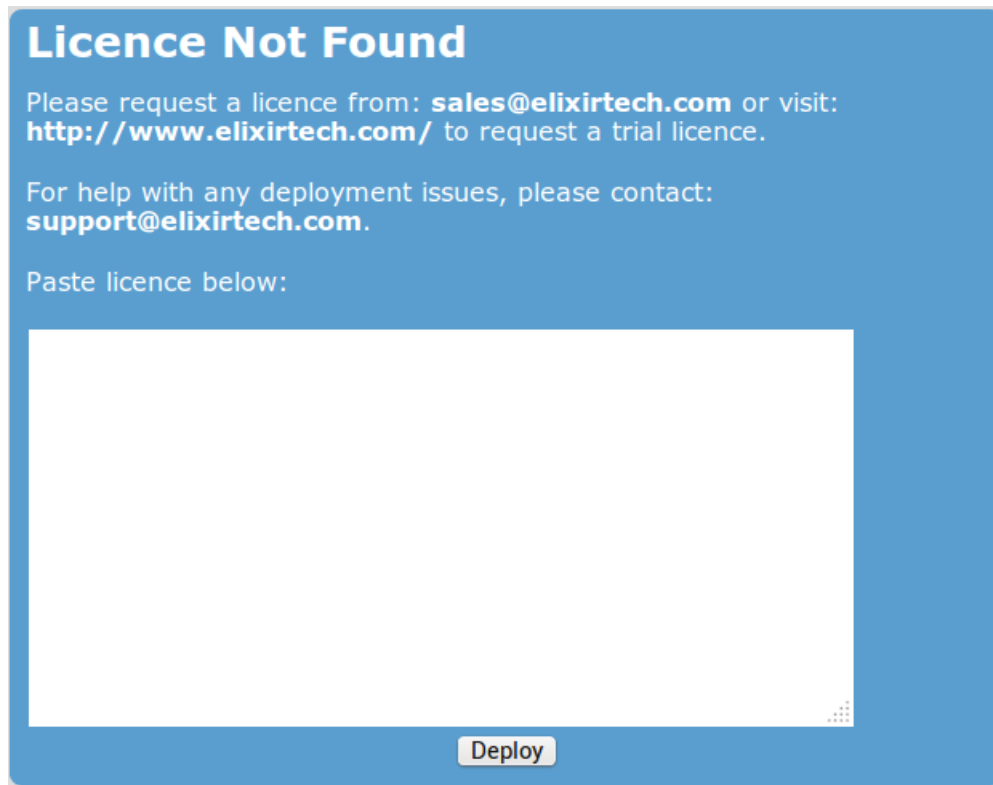
to unzip the file. Substitute the correct zip file in the unzip command. For example, `unzip elx-ambience-3.5.0.zip`. This extracts all the files into a directory called `ElixirAmbience`.



Windows users should NOT extract the files into the `\Program Files\` folder, as Microsoft controls the permissions of this subtree to prevent programs writing there. As the generic installation writes into the `ElixirAmbience\data` folder by default, this can cause access denied problems when working with regular user accounts. Use any other folder (For example: `C:\`) to extract the files.

3. Open a command prompt or terminal and navigate to the `bin` directory inside the `ElixirAmbience` directory. For example: `cd ElixirAmbience/bin`
4. Start the server. On Unix run: `sh run-server.sh`. On windows run `run-server.bat`
5. Open your browser and navigate to `http://<hostname>:8080` to access the Ambience page.
6. Once you enter your domain to login, the licence page appears as follows:

Figure 1.1. Licence Page



7. Enter your licence and click **Deploy** to deploy your licence.

The `etc` directory inside the `ElixirAmbience` directory contains the configuration files for Ambience.

The log files are stored in the `log` directory inside the `ElixirAmbience` directory.

Chapter 2

Installation on Linux

Installation on Debian Linux



Chapter 1 has already covered all you need to get the Ambience system running. This chapter is for those users who wish to explore the tighter platform integration possibilities of running as a Linux service and want the file layout to follow established directory structures - for example `/var/log` for log files.

Ensure that you have `unzip` installed on your system as the installer is supplied as a zip file. To install `unzip`, run:

```
apt-get install unzip
```

either as root, or using `sudo`.

1. Verify the SHA1 sum of the file that you received when you purchased Ambience, or when you downloaded a trial version, to ensure its integrity.

2. Unzip the installer. For example,

```
unzip ElixirAmbience-Debian-3.5.0.zip
```

The deb file is extracted.

3. As root or using `sudo`, install the deb file. For example, run

```
dpkg -i elx-ambience_3.5-1_all.deb
```

Ambience is now installed.

4. As root or using `sudo`, start the ambience service. Run

```
service ambience start
```

5. To check if Elixir Ambience has started, run the command:

```
ps aux | grep ambience
```

The output should be similar to:

```
xxx@systemadmin-Lenovo-G570:~$ ps aux | grep ambience
xxx  5845  0.0  0.0 13644   952 pts/4  S+  08:36   0:00
grep --color=auto ambience
elixir  13497  0.4  5.4 3515832 439928 ? S1   Mar17   8:50
/usr/bin/java -Delixir.home=/opt/elixir/ElixirAmbience
-Djetty.home=/opt/elixir/ElixirAmbience/jetty
-Dlogback.configurationFile=/etc/elixir/logback.xml
```

```
-Delx.stub.out=/var/log/elixir/ambience.txt  
-Dvisualvm.display.name=Ambience  
-jar elx-stub.jar org.eclipse.jetty.start.Main
```

6. To auto start Ambience at boot, run the command:

```
update-rc.d ambience defaults
```

either as root, or using sudo.

7. Open your browser and navigate to `http://<hostname>:8080` to access the Ambience page.
8. Once you enter your domain to login, the licence page appears as shown in [Figure 1.1, “Licence Page”](#) .:
9. Enter your licence and click **Deploy** to deploy your licence.

After completing the deployment to the Linux platform, you will find that the default file locations have changed as follows:

The `/etc/elixir` directory contains the configuration files for Ambience.

The log files are stored in the `/var/log/elixir` directory.

Chapter 3

Installation on Macintosh

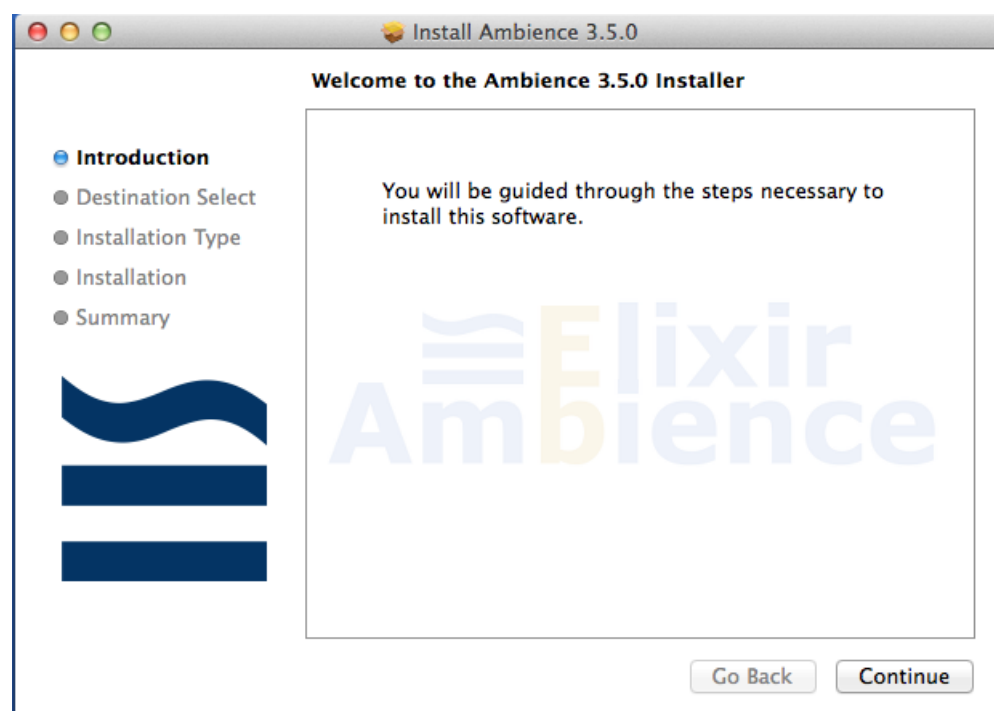
Installing Ambience on Macintosh OS



Chapter 1 has already covered all you need to get the Ambience system running. This chapter is for those users who wish to explore the tighter platform integration possibilities of running as a Macintosh service and want the file layout to follow established folder structures.

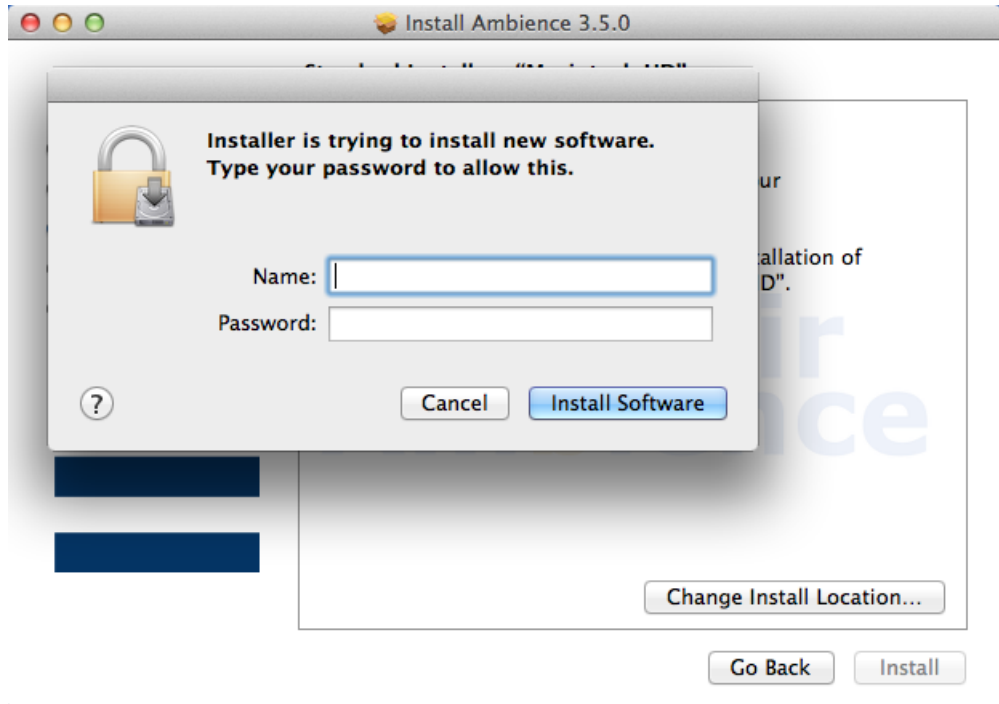
1. Verify the SHA1 sum of the `.pkg` file that you received when you purchased Ambience, or when you downloaded a trial version, to ensure its integrity.
2. Double click the `.pkg` file to start the installation. The installer is displayed as follows:

Figure 3.1. Ambience Installer



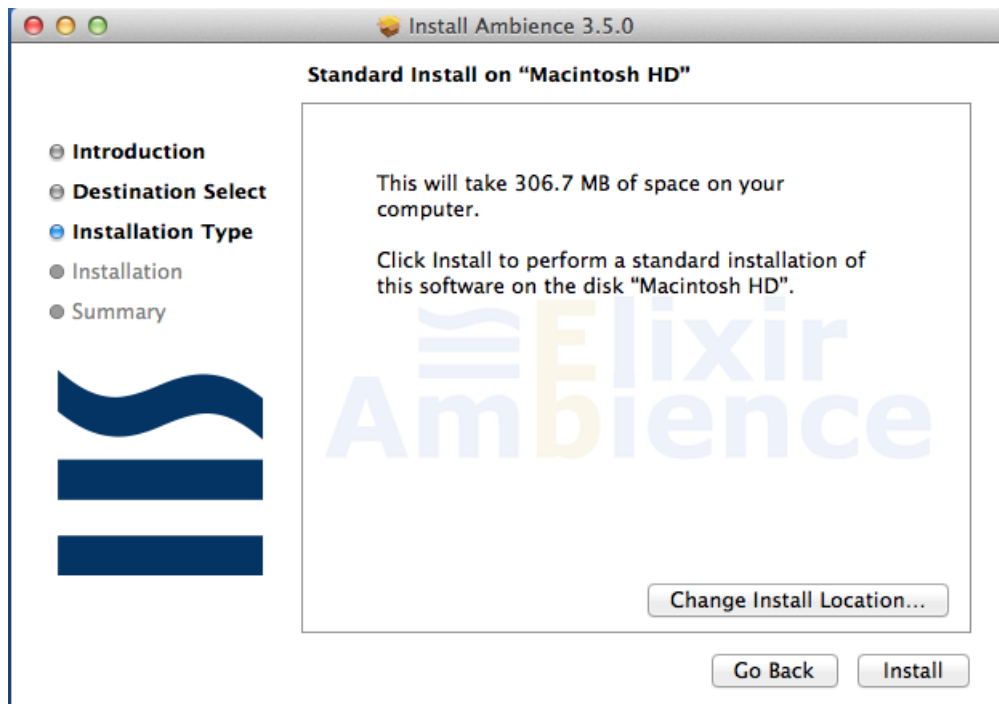
3. Click **Continue**.
4. Change the install location if needed. Click **Install** to install Ambience.
5. Enter the administrator user name and password in the following screen.

Figure 3.2. Enter Administrator Credentials - Ambience Installer



6. Click **Install Software**.
7. The installer displays a summary of the installation parameters, as shown in the following example.

Figure 3.3. Installation Summary



8. Click **Install**.

- Two applications - one to start and stop the Ambience service, and the other to start the Ambience Designer - are installed in the Applications folder.

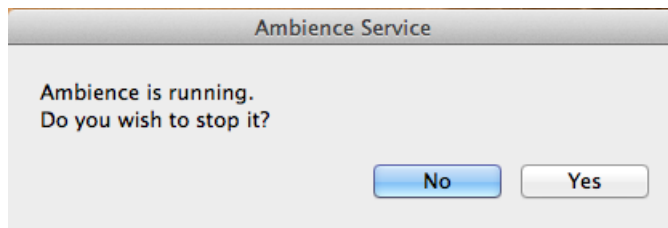
Stopping and Starting the Ambience Service on Macintosh OS

The Ambience service is automatically started after installation, and on boot.

To manually stop and start the service:

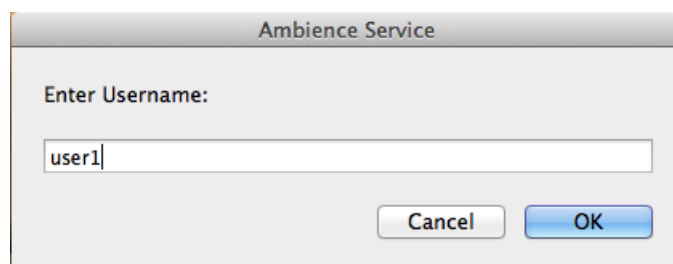
- Navigate to the Applications folder.
- Double click Ambience Service to stop it.
- Click **Yes** in the confirmation dialog as shown in the following example.

Figure 3.4. Confirmation Dialog - Stop Ambience Service



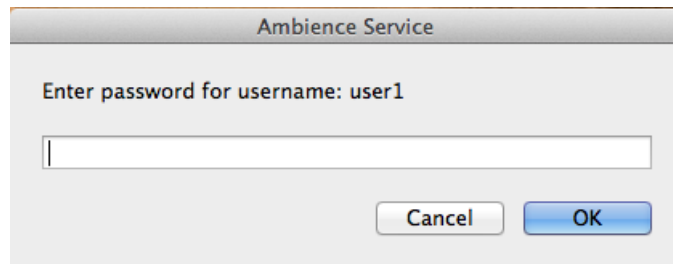
- Wait a few seconds for the service to stop.
- Double click Ambience Service to start it.
- Enter the administration credentials in the following screens:
 - Enter the administration user name in the following screen.

Figure 3.5. Enter Administrator User Name - Ambience Service



- Enter the administration password in the following screen.

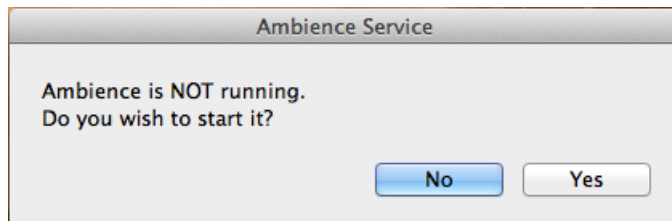
Figure 3.6. Enter Administrator Password - Ambience Service



This service runs as user `elixir` but requires administration privileges to start it.

7. Click **Yes** in the following dialog, to start the Ambience service.

Figure 3.7. Start the Ambience Service



Starting Ambience Designer on Macintosh OS

From the `Applications` folder, double click `Ambience Designer` to start Ambience Designer.

After completing the deployment to the Macintosh platform, you will find that the default file locations have changed as follows:

The `/opt/elixir` folder contains the Ambience installation, including the configuration files.

The log files are stored in the `/opt/elixir/log/` directory.

Chapter 4

Installation on Windows

Running as a Windows Service



[Chapter 1](#) has already covered all you need to get the Ambience system running. This chapter is for those users who wish to explore the tighter platform integration possibilities of running as a Windows service.

Ensure that you have a zip utility such as 7-zip or winzip installed on your system as the installer is supplied as a zip file.

1. Verify the SHA1 sum of the file that you received when you purchased Ambience, or when you downloaded a trial version, to ensure its integrity.
2. Unzip the installer package.



If you already have the generic installation as mentioned in [Chapter 1](#), you only need to unzip the Windows Overlay package file, for example: `elx-ambience-windows-overlay-3.5.0.zip`.

If you do NOT have the generic installation as mentioned in [Chapter 1](#), then download the full Windows installation package: for example, `elx-ambience-windows-3.5.0.zip`.

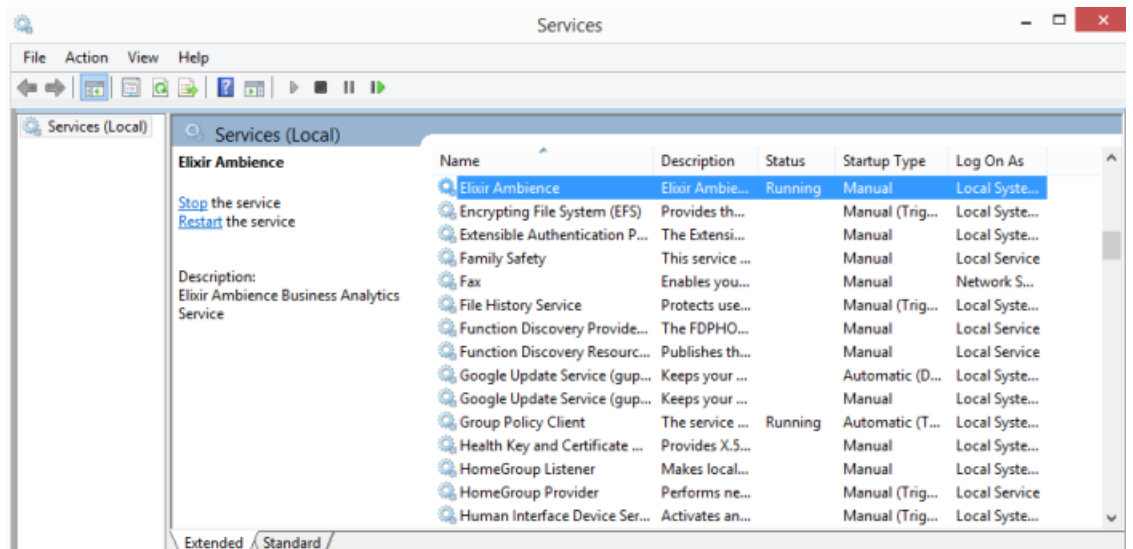
You should have the following files as shown in [Figure 4.1](#), “Windows Installer Files”.

Figure 4.1. Windows Installer Files

Name	Date modified	Type	Size
bin	12/1/2014 12:36 PM	File folder	
data	12/1/2014 10:57 AM	File folder	
etc	12/1/2014 10:55 AM	File folder	
init	12/1/2014 10:55 AM	File folder	
jetty	12/1/2014 10:55 AM	File folder	
lib	12/1/2014 10:55 AM	File folder	
licenses	12/1/2014 10:55 AM	File folder	
log	12/1/2014 10:57 AM	File folder	
misc	12/1/2014 10:55 AM	File folder	
web	12/1/2014 10:55 AM	File folder	
config	12/1/2014 12:01 AM	File	1 KB
elx-stub	12/1/2014 12:01 AM	Executable Jar File	8 KB
WinRun4J	12/1/2014 12:07 AM	Pale Moon HTML ...	19 KB
WinRun4J	12/1/2014 12:07 AM	Executable Jar File	59 KB
WinRun4J-extras	12/1/2014 12:07 AM	Executable Jar File	3 KB

3. From the bin folder, run `install-service.bat`. This will install Ambience as a service.
4. You can now start and stop the Ambience service from the Windows service manager as shown in Figure 4.2, “Windows Installer Files”.

Figure 4.2. Windows Installer Files



5. Read the `WinRun4J.html` file for customization options.

Chapter 5

Changing your Java Version

Using a Specific Version of Java



This is applicable only in a very exceptional situation where you must use a legacy version of Java because of other legacy programs that depend on it, on your system. Use this only when you cannot change your system wide Java version. This feature is only available from Ambience version 3.7 onwards.

Change the Java path in `etc/application.conf`.

The default in `etc/application.conf` reads:

```
elixir.jobengine.launcher.java-program="java"
```

Change that line to:

```
elixir.jobengine.launcher.java-program="/full_path_to_java_executable".
```

For example:

```
elixir.jobengine.launcher.java-program="/usr/bin/jre-6/bin/java"
```

Alternately, you can pass the full path to the Java executable, using the `-D` flag when running the `run-server` script.

For example:

```
sh run.server.sh -D /usr/bin/jre-6/bin/java
```

or

```
run-server.bat -D /usr/bin/jre-6/bin/java
```

depending on your operating system.