

Elixir Repertoire User Manual

Release 3.5.0



Elixir Technology Pte Ltd

Elixir Repertoire User Manual: Release 3.5.0

Elixir Technology Pte Ltd

Published 2014

Copyright © 2014 Elixir Technology Pte Ltd

All rights reserved.

Java is a trademark or registered trademark of Oracle Corporation in the United States and other countries. Microsoft and Windows are trademarks of Microsoft Corporation.

Table of Contents

1. About Elixir Repertoire	1
Overview	1
Launching Repertoire Designer	1
Launching Repertoire Designer with a Specific Report, DataSource or Dashboard	2
Repertoire Designer Features	2
2. The Elixir Interface	3
Overview	3
Action Bar	3
Elixir Repository	4
Types of Files	5
FileSystems	6
Working with FileSystems	6
Working with Files	7
Recent Files	8
The Workspace	8
3. Elixir Safe	9
Introduction	9
Using a Safe	10
4. Elixir JavaScript Editor	11
Introduction	11
Function Availability	12
Referencing JavaScript	12
5. Function Reference	13
Overview	13
General Functions	13
Average	13
Comma Separated List	13
Comma Separated Set	13
Count	13
First	13
Last	13
Max	14
Median	14
Min	14
Percent	14
Percent100	14
PercentCount	14
PercentCount100	14
Standard Deviation	14
Sum	14
Variance	14
Year To Date	15
Month To Date	15
Additional Cube Functions	15
Nested Percent Variants	15

List of Figures

1.1. Repertoire Login Screen	1
2.1. Elixir Repertoire Main Frame	3
2.2. Adding New Files and Filesystems	5
2.3. Import Wizard	7
3.1. Add Safe Wizard	9
3.2. Safe Password Prompt	10
4.1. JavaScript Editor	11

Chapter 1

About Elixir Repertoire

Overview

Elixir Repertoire is an integrated Business Intelligence suite, designed for enabling Intelligent Enterprises to compete effectively in this fast-moving globalized market. Addressing the end-to-end information life cycle, one can activate the entire suite or the individual products as required to aggregate and transform, present and deliver, navigate and visualize, and monitor and activate enterprise data.

Launching Repertoire Designer

Note

Ambience should also be started and running before starting Repertoire. To start Ambience, refer to the Ambience Installation Guide.

To launch Repertoire Designer:

Open a command prompt. Navigate to the `ElixirAmbience/bin` directory. Enter one of the following commands:

```
run-designer.bat
```

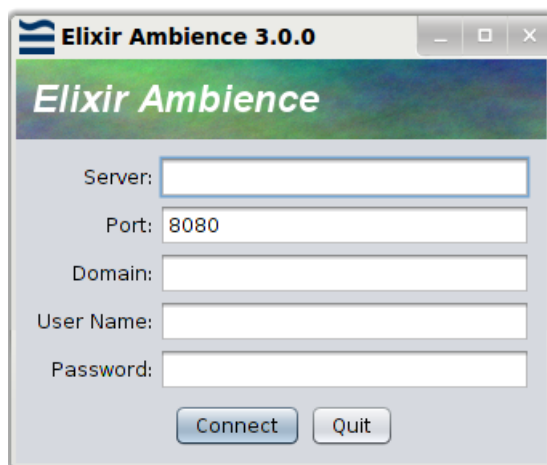
if you are using Windows.

```
sh run-designer.sh
```

if you are using Linux.

The Repertoire Designer login screen is displayed as follows:

Figure 1.1. Repertoire Login Screen



The login details to be entered are as follows:

1. Server: The server on which Repertoire is running. By default, it is localhost.
2. Port: The port on which Ambience is running. By default, it is 8080.
3. Domain: The domain to login. The default domain is eno.
4. Username: The username to login. The default username is admin.
5. Password: The password to login. The default password is sa.

Launching Repertoire Designer with a Specific Report, DataSource or Dashboard

You can launch Repertoire Designer and open a specific file at the same time. This is applicable to Report(.rml), DataSource(.ds) and Dashboard(.pml) files. To do this, you will need to launch Repertoire Designer using a command prompt, as mentioned in [the section called “Launching Repertoire Designer”](#). However, instead of the commands mentioned previously, enter the following instead:

```
run-designer.bat -maxWorkspace  
-initialFile repository:<PathOfFile>
```

if you are using Windows.

```
sh run-designer.sh -maxWorkspace  
-initialFile repository:<PathOfFile>
```

if you are using Linux.

Here are examples for launching Repertoire Designer with a Report:

```
run-designer.bat -maxWorkspace  
-initialFile  
repository:/ElixirSamples/Report/Components/Checkbox.rml
```

if you are using Windows.

```
sh run-designer.sh -maxWorkspace  
-initialFile  
repository:/ElixirSamples/Report/Components/Checkbox.rml
```

if you are using Linux.

Repertoire Designer Features

Elixir Repertoire Designer is a design tool containing the following components:

- **Elixir Data Designer** for extracting, merging and processing data from a variety of datasources, either to generate direct data output (for example, Excel files or database records), or to feed data into Elixir Report and Elixir Dashboard Designers.
- **Elixir Report Designer** for designing report templates and rendering data into a variety of output formats, including PDF, Excel and HTML.
- **Elixir Dashboard Designer** for creation of dashboards, allowing interactive visualization and manipulation of data, combining interactive reporting and data analysis.
- **Elixir Report Interactive** for rendering reports using an editable snapshot of the data, requiring no datasource connection.

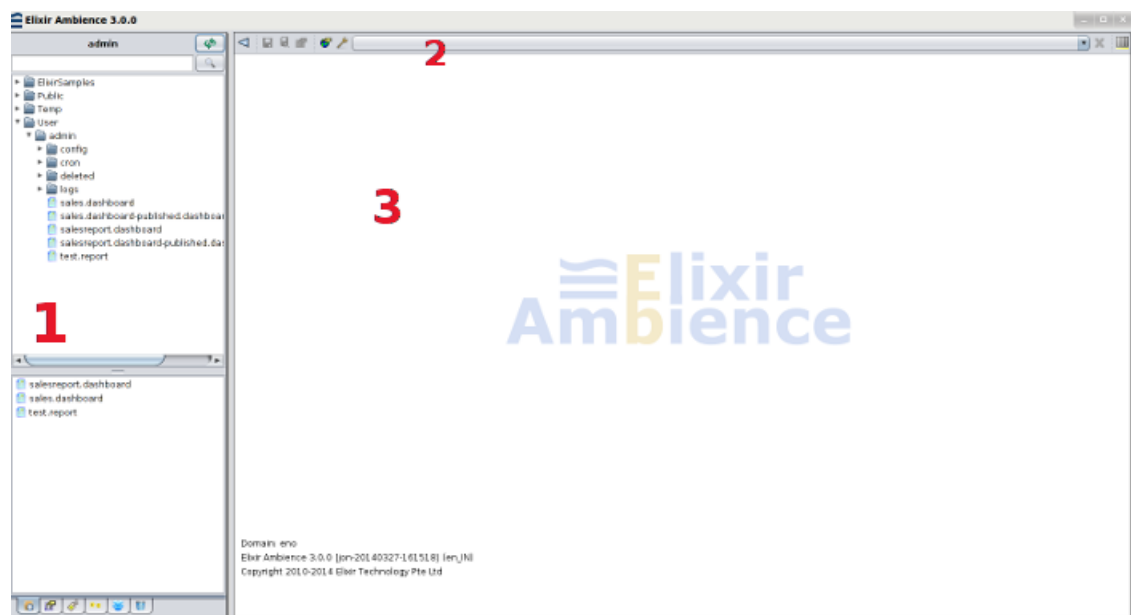
Chapter 2

The Elixir Interface

Overview

The Elixir Repertoire screen is displayed as show in [Figure 2.1](#), “Elixir Repertoire Main Frame”. The window consists of three parts, the Elixir Repository, Action Bar and Workspace.



Figure 2.1. Elixir Repertoire Main Frame









The panel on the left is the Elixir Repository (1). The Action Bar (2) is across the top on the right and the Workspace (3) is the area currently filled by the logo and build information below it.

Action Bar

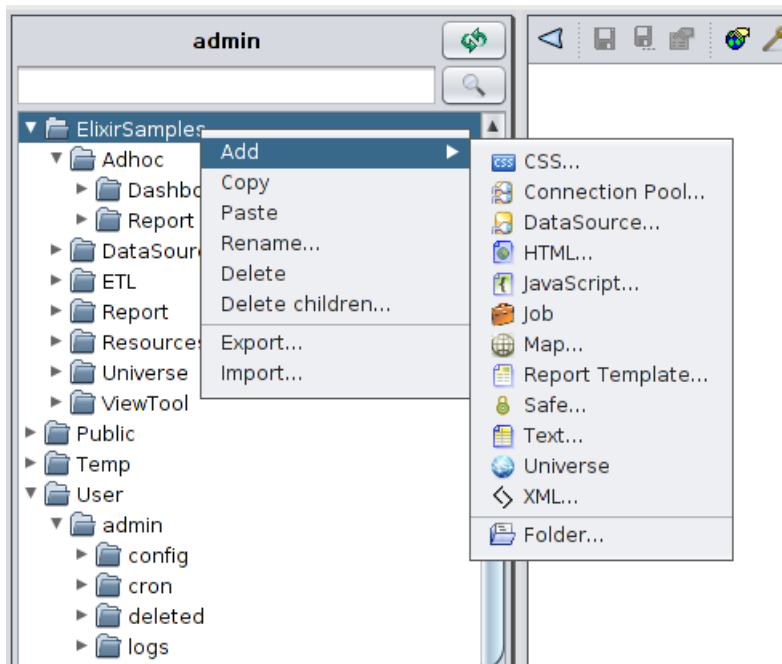
The action bar present at the top of the right panel contains the Expand/Collapse, Save, Save As, Properties, Global Properties, Help, Show Console, Administration Tools and Close View buttons. It also includes a Combo Box and the Progress Indicator.

- *Expand/Collapse:* The Expand/Collapse icon () allows you to hide or show the Elixir Repository panel. The triangle points left to Collapse and then changes to point right, indicating that you can Expand again.
- *Save:* The Save icon () will be enabled when the current view has been modified and not saved.

- **Save As:** The Save As option () allows you to save the current view under a different name in the repository. Subsequent save operations will use the new name. The original file remains unchanged, so this option is useful for versioning.
- **Properties:** The Properties icon () is only enabled when a view is open in the workspace. On clicking the icon, the appropriate wizard appears.
- **Global Properties:** The Global Properties icon () allows properties of the toolset to be edited. The precise options available will vary based on the combination of Elixir tools and extensions that are installed.
- **Administration Tools:** Clicking the Admin Tools icon () displays the Administration Tools window. It provides a set of tools that help you administer jobs, JDBC driver libraries and the scheduling of calendars and triggers. For detailed information, refer to the *Elixir Administration Tools User Manual*.
- **Combo Box:** The Combo Box present in the toolbar lists the various data sources and other views currently open in the workspace. The user can select the view they wish to work on by selecting from the list.
- **Progress Indicator:** The Progress Indicator () indicates the progress of the application while the data is being loaded. This indicator includes a popup menu that allows certain long operations to be aborted.
- **Close View:** () A left click will close the current view. Right-clicking will show a popup menu with a list of options:
 1. **Close This View:** On selecting this option, the currently active view is closed (same as left-click).
 2. **Close Others:** On selecting this option, the views other than the currently active view are closed.
 3. **Close All Views:** On selecting this option all the views are closed.

Elixir Repository

Right clicking any entry from the Repository tree, allows you to add new files and file systems. Each menu item launches a wizard to guide you through the process.

Figure 2.2. Adding New Files and Filesystems

Types of Files

CSS

CSS is used to create and edit a Cascading Style Sheets file. It can define the styles of a report, including background, fonts, headers and footers.

Connection Pool

A Connection Pool allows connections to JDBC databases and connection properties to be shared among multiple datasources. Connection Pools are described in the *Elixir Data Designer User Manual*.

DataSource

DataSource is the principal building block in an Elixir Repertoire solution. External data may be wrapped as a DataSource and multiple DataSources may be merged and processed by a Composite DataSource. Each type of DataSource is described in the *Elixir Data Designer User Manual*.

HTML

HTML is used to create and edit a Hypertext Markup Language file. HTML can be imported into a Dashboard and embedded in a Frame or Page.

JavaScript

Elixir Repertoire is an extensible tool, allowing users familiar with Java or JavaScript to integrate the tool with their code or customize the tool to meet their own requirements. Many parts of the tool allow JavaScript to be embedded. However, if the same scripts are required in multiple locations it is preferable to create a common JavaScript file in the repository and then import it into each DataSource, Report or Dashboard that requires it. This editor is discussed further in [Chapter 4, *Elixir JavaScript Editor*](#).

Job

Job is used to add tasks that are intended to run together.

Map

A Map is a visual representation of geographic areas and adds new dimensions to data visualisation. More information about Map can be found in the `Elixir Map Designer` documentation.

Perspective

A Perspective holds the definition for a dashboard - a set of interactive views, including tables, charts, reports and data cubes. Dashboards are stored in Perspective Markup Language (with XML syntax), with the file extension `.pml`. Perspectives are described in the `Elixir Dashboard Designer Manual`.

Report Template

A Report Template holds the specification for a report, including the layout of report components and references to the datasources needed to provide the data during rendering. Reports are stored in Report Markup Language (with XML syntax), with a file extension `.rml`. Report Templates are described in the `Elixir Report Designer User Manual`.

Safe

A Safe is an encrypted text file, used for holding valuable text-based information, such as database and passwords. The Safe is described in [Chapter 3, *Elixir Safe*](#).

Text

A simple text editor/viewer is included for reviewing log files and CSV data.

Universe

A Universe is an interface to data. You can add more than one Universe to handle higher-volume data processing. Universes hold many tables. There are two types of Universes: Repository and JDBC. In the Repository Universe, each table maps to a DataSource. Universes can exist anywhere in the Repository, but are only accessible when mapped to a Universe name. All modules that use Universe reference the universe name instead of the path. This enables you to easily switch between different Universes by re-mapping. Universe mapping is a feature only available for administrators.

XML

XML is used to create and edit an Extensible Markup Language file. It can be imported into DataSources and pass the data.

FileSystems

Regardless of the type of file system, each has a name. This name must be unique as it forms the base for each repository path. For example, if a file system called `FS` contains a datasource called `mine.ds`, then the full name of the datasource is `/FS/mine.ds`. Elixir Repository always uses `/` for path separators, like URLs, regardless of the platform on which it is running. Anywhere a URL can be specified, you can use the special protocol `repository:` to refer to files. For example, the URL

```
repository:/FS/mine.ds
```

refers to the datasource described above.

Working with FileSystems

You can add, remove and delete file systems from the Domain Manager. For more information, refer to the `Domain Manager User Manual`..

Working with Files

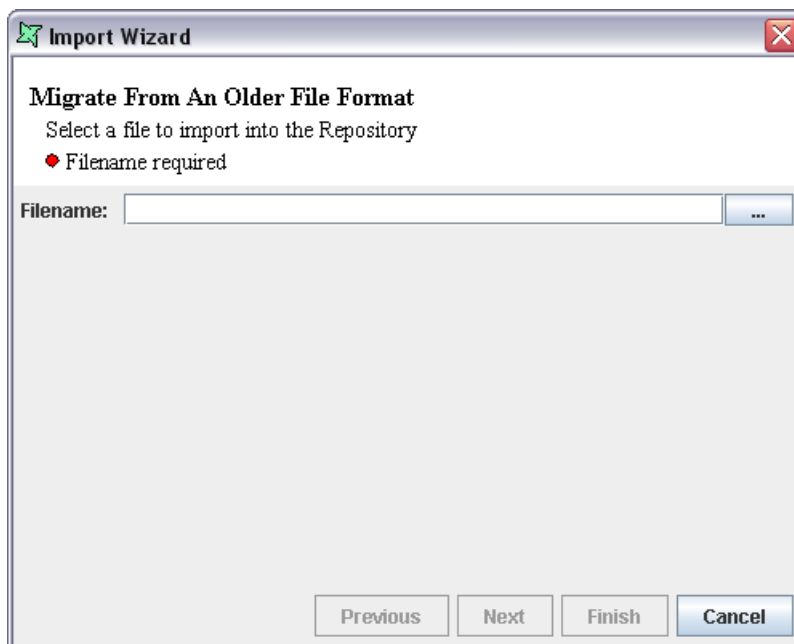
After adding a file system to the Repository, different files, for example DataSources, Dashboards, Reports and Folders can be added to it.

Each file system, folder and file has a popup menu showing the available actions. File systems and folders have similar options:

- *Add*: Using this menu item, several kinds of files or a folder can be added. Each will invoke a specialized wizard to guide you through the creation process.
- *Import*: Import allows files to be imported into the repository. This option is for files that need some migration or extraction to be used in the Repertoire tool. Primarily this option is used for Elixir Report 4 .sav and .template files.

Choose a file system or folder into which the data source or template should be imported, and select **Import** from the popup menu. The "Import Wizard" appears as shown in [Figure 2.3, "Import Wizard"](#). You can use the browse button to choose the file to be imported. On clicking **Finish**, the file gets imported into the repository. A .sav file contains many datasources, so each will become a separate .ds file in the chosen location.

Figure 2.3. Import Wizard



Note

It is only necessary to import files from Elixir Report prior to version 5.0. Version 5.0 and later files can be read by the tool without any special import/extraction/migration step.

- *Refresh*: (Only applies to file systems, not folders.) On selecting this option the file system will be refreshed and any changes to the files and folders made using tools other than Repertoire, will be visible.
- *Remove*: A file system or folder can be removed from the repository when this menu item is selected.
- *Delete*: A file or folder can be deleted from the file system when this menu item is selected. Delete actually only hides the file by giving it a .bak extension. Files and folders with .bak extensions are

hidden from Repository views, but can be restored (if you made a mistake) by renaming them using operating system commands. To permanently delete a file or folder, you should Compact after deleting, which will remove all .bak files. Refer to the `Domain Manager User Manual` for compacting a file system.

Recent Files

At the lower portion of the Elixir Repository page, files that have been opened recently will be listed under `Recent Files`. Files that are deleted will also be listed, but when user tries to open them, an error will occur informing the user that the file is no longer available.

A maximum number of five files will be listing under `Recent Files`. By right-clicking within `Recent Files`, user will have the option to clear the history and files listed will be removed from the panel.

The Workspace

Each component of Elixir Repertoire consists of one or more views that will display in this area. See the documentation for the individual components for a description of the features available from that view.

Chapter 3


Elixir Safe

Introduction

Elixir Repertoire tools include a Safe file type. A Safe is for holding valuable text-based information, for example passwords. Each Safe is encrypted on disk using a password. If you lose the password, it cannot be retrieved - the contents are gone for good.

To create a Safe file, choose a location in the Repository and from the popup menu select **Add > Safe...** A wizard will appear, as shown in [Figure 3.1](#), “Add Safe Wizard”.

Figure 3.1. Add Safe Wizard



The screenshot shows a dialog box titled "Add Safe Wizard" with a standard Windows-style title bar (minimize, maximize, close buttons). The main content area is titled "Add Safe" and contains the instruction "Enter a name and password for the Safe file". Below this, there is a red bullet point indicating "Name required". There are three text input fields: "Name:", "Password:", and "Repeat Password:". At the bottom of the dialog, there are four buttons: "Previous", "Next", "Finish", and "Cancel". A faint blue logo is visible in the top right corner of the dialog's content area.

Enter a unique file name and enter and repeat the password for confirmation. The password will be required each time you open the file. If the password is lost, the file will be unreadable. After you have entered all required details and clicked **Finish** you will be presented with a text editor. You can enter plain text here, in any format and for any purpose and it will be encrypted automatically each time it is saved.

On subsequent loading, the Safe file prompts for a password to decrypt the file, as shown in [Figure 3.2](#), “Safe Password Prompt”.

Figure 3.2. Safe Password Prompt

Using a Safe

The Safe file contains plain text, so you can use it for any purpose. For example, you can use it for storing all the passwords you need to remember. If you store text in the form:

```
# This is a comment
Name=Value
Another=Something Else
```

then the file can be read as properties, which can be used as parameters to a report or datasource. To use these external properties within a report, you put a script in your Report using the `OnRenderBegin` trigger:

```
var props = elxfn.getSafeProperties( "/Workspace/Data.safe" , "pass" );
setParameters( props );
```

where "pass" is the password to unlock the Safe. The call to `setParameters` adds the name=value pairs into the report parameter list, so they will be passed to datasources etc. as required. Another benefit of this approach is that it allows you to share a common set of properties across multiple reports and datasources.

If you do not want to hard code the password in the script, you can get it from another parameter:

```
var pass = getParameterValue( "Password" );
var props = elxfn.getSafeProperties( "/Workspace/Data.safe" , pass );
setParameters( props );
```

This can either read Pass from the Report parameters, or prompt for a dynamic parameter as you choose.

Chapter 4

Elixir JavaScript Editor

Introduction

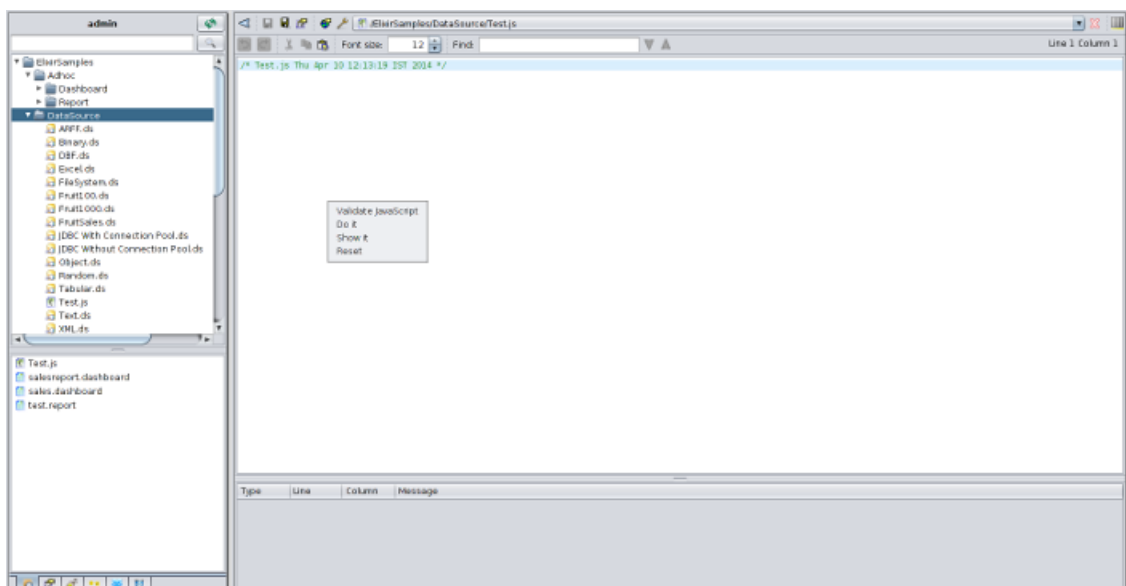
Elixir Repertoire tools include a JavaScript editor, connected to a JavaScript engine for immediate testing and evaluation of expressions. This editor allows the creation of a library of common JavaScript functions that can be added to any other JavaScript evaluation, such as a Report Function Definitions script or a Composite DataSource script.

To launch the editor:

The JavaScript editor supports syntax colouring to make it easy to see the different aspects of the code. You can evaluate code using the Popup menu and selecting an option.

- Do It: executes the selected text as a JavaScript expression.
 - Show It: evaluates the selected text as a JavaScript expression and outputs the result of evaluation back into the editor.
 - Reset: resets the JavaScript engine to the default state.
1. Right click any entity from the Repertoire tree and select Add > Javascript.
 2. Enter a filename for the Javascript file and click **Finish**.

Figure 4.1. JavaScript Editor



Function Availability

Different parts of the Repertoire tool set expose different objects and functions with which you can interact. For example, a Report script can utilise the `Renderer` object, to query the mime-type and interact with the `RawReport` object. However, it is an error to reference these objects when executing an Ensemble script (e.g. a `Composite DataSource` script), because these objects are not available in the Ensemble context. You need to be aware when creating a reusable JavaScript file what context it will be running in so that you can ensure you are accessing the appropriate objects.

Referencing JavaScript

Once you have created a JavaScript (.js) file holding some functions you want to reuse, you need to import it into your tool scripts. The syntax for importing a javascript file is:

```
importScript( "/ElixirWorkspace/MyScripts/Core.js" );
```

To avoid repeated import of the same scripts, the import should be done in a script that is only executed once. For example the `Function Definitions` of a Report template, or the `Script` tab of a `Composite DataSource`.

Chapter 5

Function Reference

Overview

Many Elixir designers incorporate some form of data manipulation. For example:

- Taking the Count of the customers in Washington using a Cube in a Composite DataSource
- Showing a Running Sum of your accumulated sales in a Report
- Highlighting the Percent of frozen goods sold to a chosen retailer in a Dashboard

There are a standard set of functions such as Count, Sum and Percent mentioned above that can be used throughout the Repertoire Suite.

General Functions

Average

The Average takes a sequence of values, sums them and divides the result by the number of values. This function will work on all numeric types. The result will always be a double.

Comma Separated List

The Comma Separated List takes a sequence of values and returns a single string containing these values separated by commas. For example, if the selected fields from three records are Apple, Orange, Strawberry, you will get back a String "Apple, Orange, Strawberry".

Comma Separated Set

The Comma Separated Set takes a sequence of values and returns a single string containing the discrete values separated by commas. This means duplicates are removed. For example, if the selected fields from five records are Apple, Berry, Apple, Orange, Berry, you will get back a String "Apple, Berry, Orange" - each item is only listed once.

Count

The Count result is the number of values that the function has received. This is most useful in cubes where usually different numbers of records are partitioned into each cell.

First

The First function always replies with the first value that it receives.

Last

The Last function always replies with the last value that it receives.

Max

The Max result is the largest value received. This function works for all comparable types, including strings and dates as well as numbers.

Median

The median function takes a sequence of values, which should have been sorted in increasing order and returns the value in the middle. If the number of elements is even then it returns the average of the two values closest to the middle. Hence this function only works on numbers and dates. For instance, if there are numbers 1,2,2,3,3,4,5,6 - there is an even number of values, so the middle or median is between the first and the second three. As they are the same the median is three, but if they were different, for example if the median was between 3 and 4, the function would return $(3+4)/2=3.5$.

Min

The Min result is the smallest value received. This function works for all comparable types, including strings and dates as well as numbers.

Percent

The Percent result is the sum of all values received divided by the sum of all values available. The result will be a number between 0 and 1, which can be formatted as a percentage (for example using the Field Format in Report).

Percent100

The Percent100 result uses the same algorithm as Percent, but the value returned is scaled into the range of 0 to 100.

PercentCount

The PercentCount result is the count of all values received divided by the count of all values available. The result will be a number between 0 and 1, which can be formatted as a percentage (for example using the Field Format in Report).

PercentCount100

The PercentCount100 result uses the same algorithm as PercentCount, but the value returned is scaled into the range of 0 to 100.

Standard Deviation

The Standard Deviation is the square root of the Variance (see below).

Sum

The Sum result is the summation of all values received. The result will always be a double.

Variance

The Variance is the measure of how spread out a distribution is. It is computed as the average squared deviation of each number from its mean (average). For example, for the number 1, 2 and 3 the mean is 2 and the variance is:

$$[(1-2)^2 + (2-2)^2 + (3-2)^2] / (3-1) = 0.5$$

Year To Date

The *Year To Date* sums value(s) of data that has the year corresponding to the current year of the system.

Month To Date

The *Month To Date* sums value(s) of data that has the month and year corresponding to the current month and year of the system.

Additional Cube Functions

Nested Percent Variants

Cube makes available four special functions, which are Nested versions of the Percent, PercentCount, Percent100 and PercentCount100. The functions behave similarly to the basic percent functions but the result is derived from all values received divided by all values in that group. Therefore, unlike Percent, which will give a percentage out of all records, Nested Percent will give the percentage out of all siblings in the same level of the cube.

Here is an example, just looking at one Cube axis:

		Percent	Nested Percent
USA		100	100
	AZ	30	30
	Apple	15	50
	Orange	10	33
	Pear	5	17
	WA	70	70
	Apple	40	57
	Orange	20	29
	Pear	10	14

Using Percent for USA-AZ-Apple would sum the value of Apples sold in Arizona and sum the value of all fruit in USA and work out the percent from those values. In other words, the value would be the percent of Arizona Apples compared to all fruit (15% in this example).

Using Nested Percent on the other hand works out the sum relative to the siblings. In this case USA-AZ-Apple would give the percentage of Apple sales compared to all fruit sales in Arizona (AZ-Apple+AZ-Orange+AZ-Pear). In this nested case it is 50%.

In the Percent column, all the items at the same level in the tree add up to 100%. In the Nested Percent column, each element's children add up to 100%.