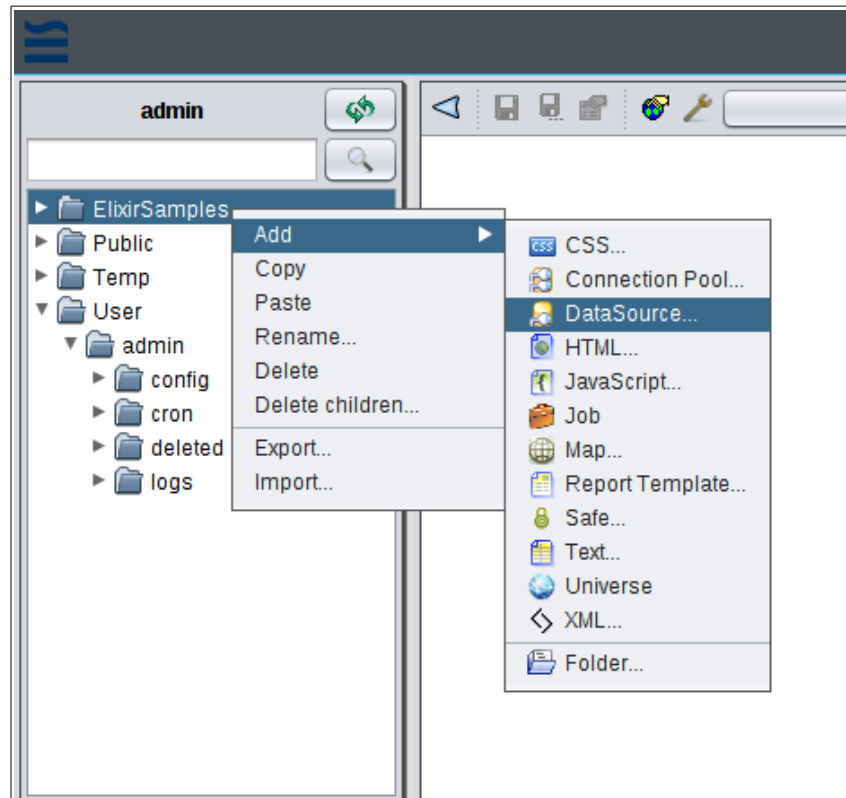


Creating the Derby Database

For a video tutorial of this section, see <https://www.youtube.com/watch?v=GflGgOCiuuw>.

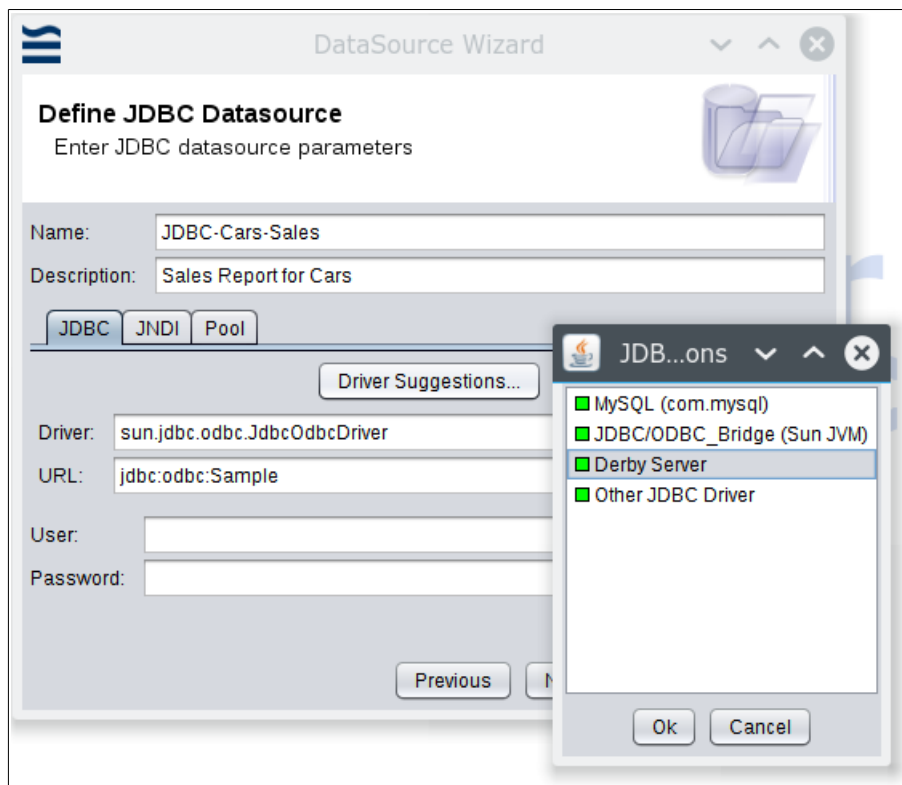
1. Start Ambience Designer.
2. Right-click on the folder tree and select **Add-DataSource**.



3. Select the Datasource as **JDBC** and click **Next**.



4. Enter a name and description.
5. Click **Driver Suggestions** and select **Derby Server** as the database driver.



6. Edit the Derby URL as follows:

jdbc:derby://localhost:1527/JDBC-Car-Sales-DB;create=true;user=cars;password=cars;

where:

- a) localhost:1527 – name of the host and port where Derby is running.
- b) JDBC-Car-Sales-DB – name of the Derby database to create.
- c) create=true – create the database, since it does not exist already.
- d) user=cars;password=cars – set the user name and password for the Derby database.

The screenshot shows the 'DataSource Wizard' dialog box. The title bar reads 'DataSource Wizard'. The main heading is 'Define JDBC Datasource' with the subtitle 'Enter JDBC datasource parameters'. The 'Name' field contains 'JDBC-Cars-Sales' and the 'Description' field contains 'Sales Report for Cars'. Below these are tabs for 'JDBC', 'JNDI', and 'Pool', with 'JDBC' selected. A 'Driver Suggestions...' button is present. The 'Driver' field contains 'org.apache.derby.jdbc.ClientDriver'. The 'URL' field contains 'jdbc:derby://localhost:1527/JDBC-Car-Sales-DB;create=true;user=cars;password=cars;'. The 'User' and 'Password' fields are empty, with a 'Hide Password' checkbox checked. At the bottom are 'Previous', 'Next', 'Finish', and 'Cancel' buttons.

Note: You can either enter the username and password for the database in the Derby URL itself or enter them in the User and Password fields.

7. Click **Next**. Do not set any JDBC properties for this exercise.
8. Click **Finish**. The database is now created.