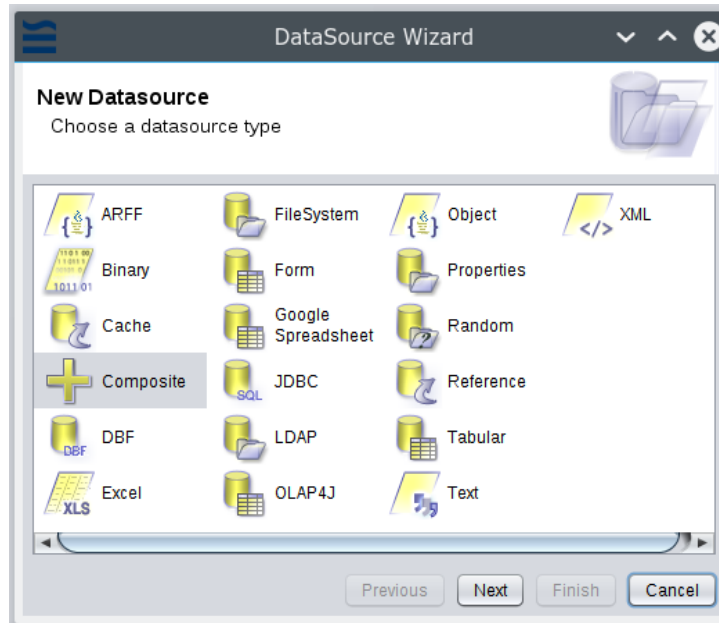


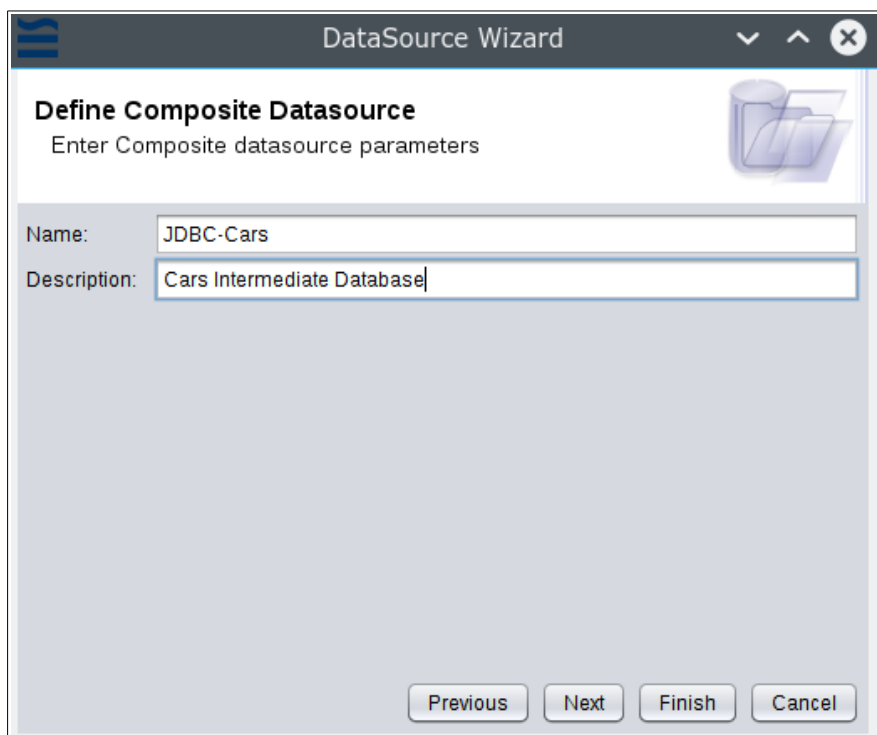
Extracting the Data From the CSV file and Loading into Derby

For a video tutorial of this section, see <https://www.youtube.com/watch?v=HYeBfCV9srw>.

1. Right click the folder tree and select **Add – Datasource**.
2. Select the Composite datasource.

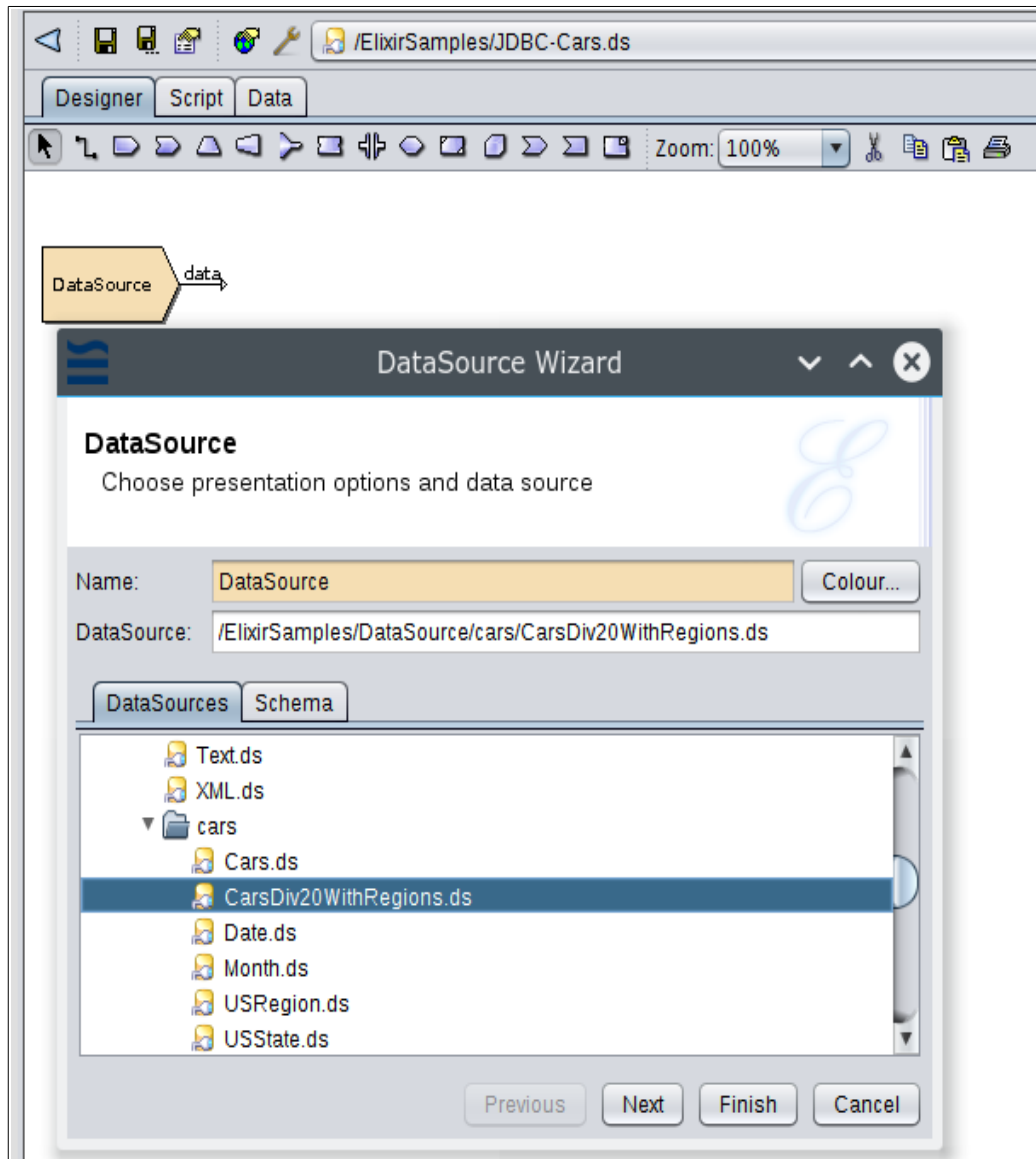


3. Click **Next**. Enter a name and description for the datasource.

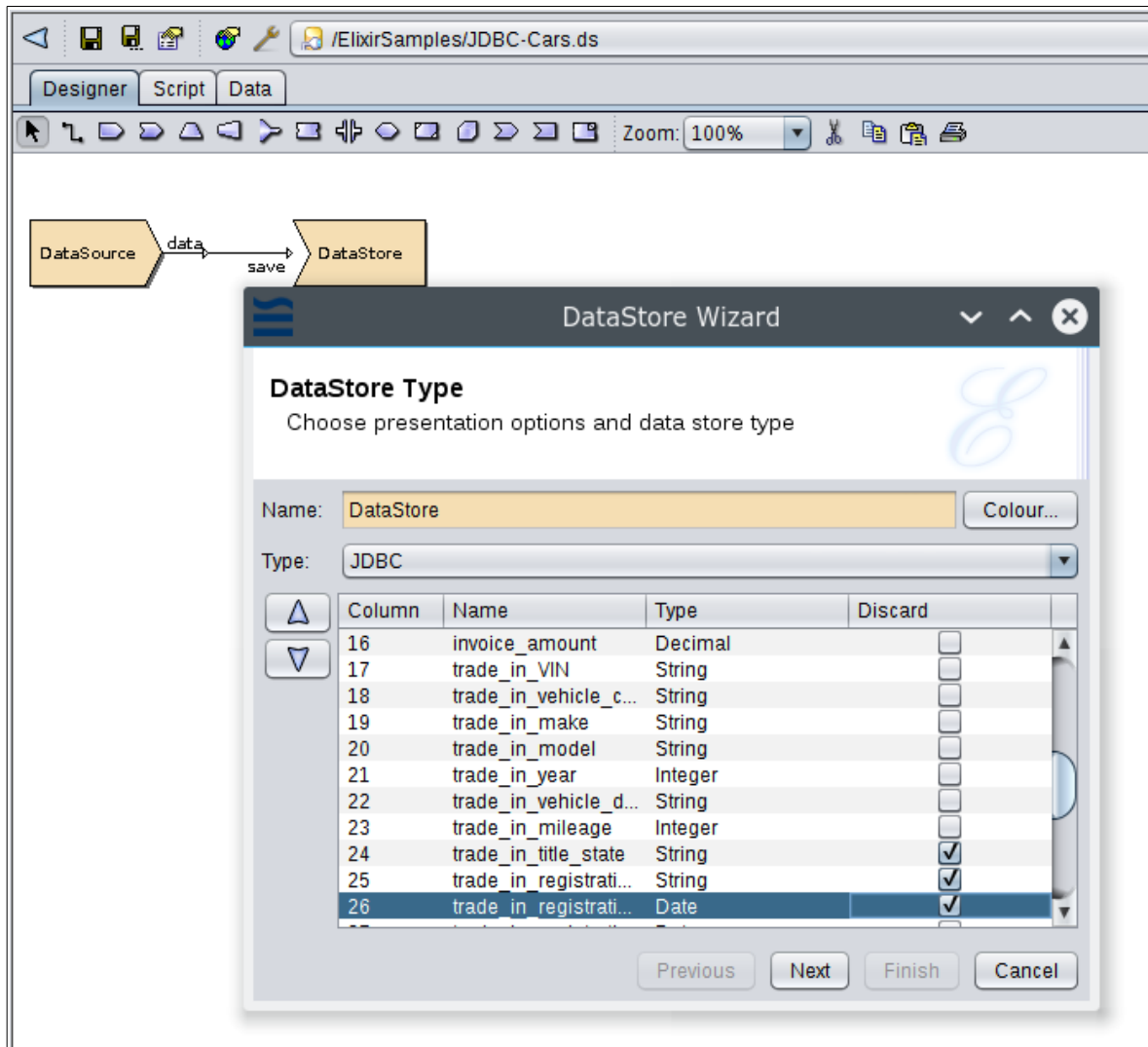


4. Click **Next** and **Finish**. The datasource is opened in the Designer.
5. Add a **Datasource** component. Right click and select **Properties**. Select the

CarsDiv20WithRegions.ds file as shown:



6. Click **Next** and **Finish**.
7. Add a **Datastore** component and link it to the **Datasource** Component.
8. Right click the **Datastore** component and select **Properties**.
9. Select the type as **JDBC**.
10. Optionally, select any columns you want to discard by clicking the **Discard** option. These columns will not be saved in the JDBC database.

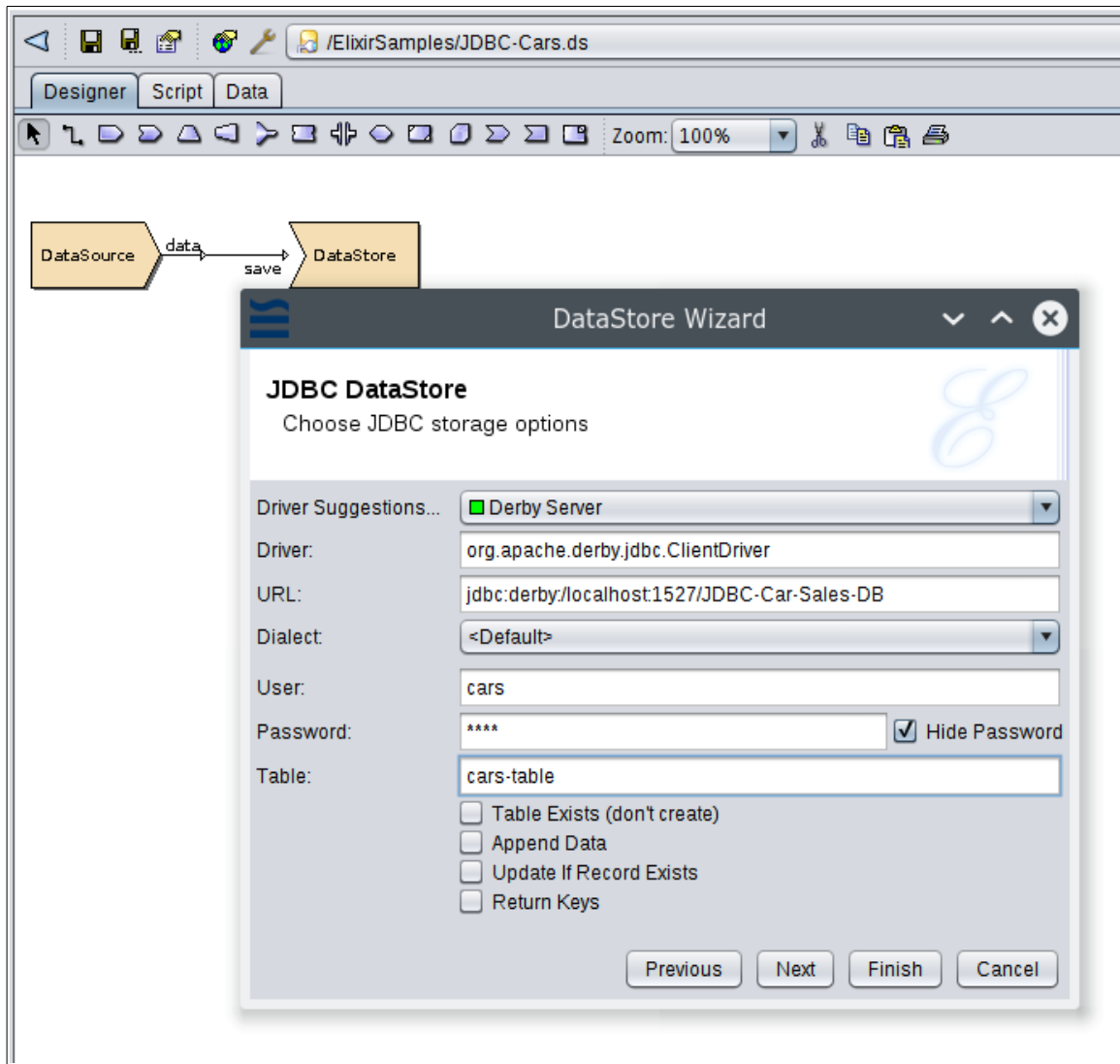


11. Click **Next**.

12. Select the Derby driver and enter the URL as:
jdbc:derby://localhost:1527/JDBC-Car-Sales-DB
This is the same database we created earlier.

13. Enter the user name and password as earlier.

14. Enter any name for the database table.



15. Click **Finish**.

16. Right click the **Datastore** and select **Generate**. This writes the data to the Derby database.